

# Swivel castor with total lock EDT 180 TLK

Extra Heavy Duty Series ED - Wheel TL

-30 °C - +80 °C

- +++

swivels easily
- +++

wear resistant
- +++

shock proof
- +++

floor protective
- +++

weather proof

## Wheel



Tread: cast polyurethane, 95±3 Shore A

Core: De-cast aluminium alloy

## Fork



For applications where a super strong and durable caster is required,  
one tapered roller and one axial ball bearing,  
dust protection ring,  
very strong integrated Kingpin,  
locked nut, grease nipple, wheel axle bolted,  
finish – painted

Swivel castor with total lock Wheel-Ø A x width B mm: 180x50

Load Capacity kg: 700

Load capacity tested according to EN 12530 and EN 12527

Overall height H mm: 241

Dimension of top plate TP 135,110 mm:

Hole spacing HS mm: 105x80

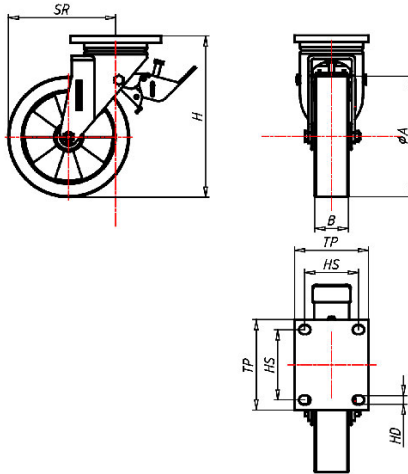
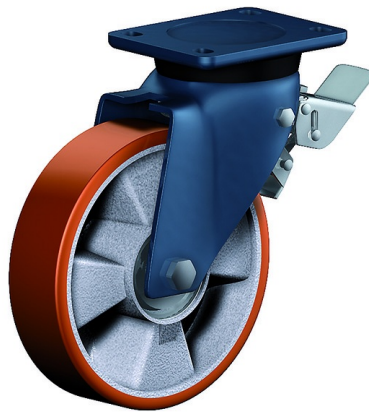
Hole-Ø HD mm: 13

Swivel radius SR mm: 172

Wheel bearing: Ball bearing

## Advantages

- ✓ silent in motion
- ✓ low rolling resistance
- ✓ high abrasion and tear resistance
- ✓ high resistance to shocks
- ✓ good chemical resistance



## Applications

- Metal-Technology
- Heavy duty dollies
- Trash container trucks
- Machinery moving dollies
- Workshops
- Racks
- Building-Industry
- Carpentry